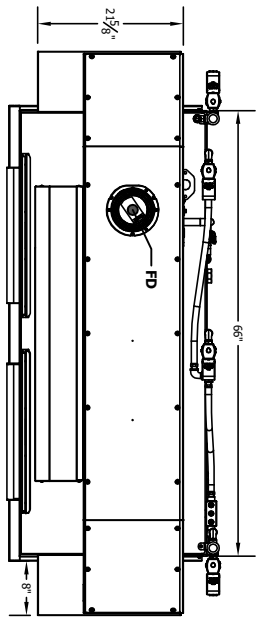


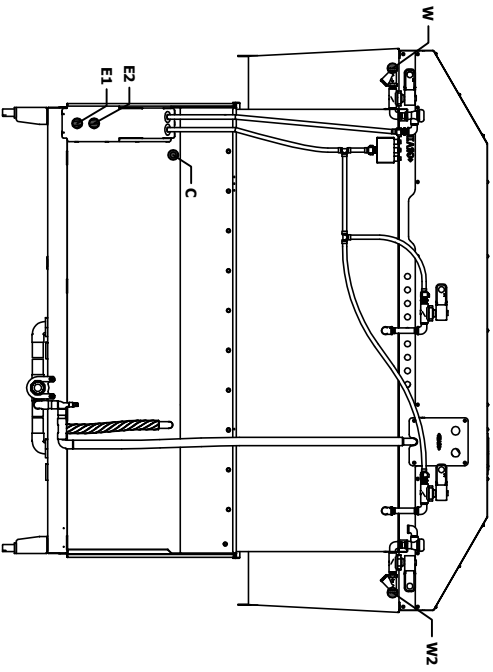
INSTALLATION CONNECTIONS

Description	Note
D DRAIN CONNECTION	1-1/2 F-NPT
W HOT WATER INLET (110° F MIN.)	1/2 F-NPT
E1 MAIN ELECTRICAL (SINGLE & 2-POINT)	1-3/8 HOLE
E2 BOOSTER ELECTRICAL (2 PT ONLY)	1-3/8 HOLE
C CHEMICAL LINE & SIGNAL ACCESS	1/2 HOLES (4)
W2 COLD WATER INLET (75° F MAX.)	1/2 F-NPT
FD FAN DISCHARGE (VG ONLY)	6" CLEARANCE

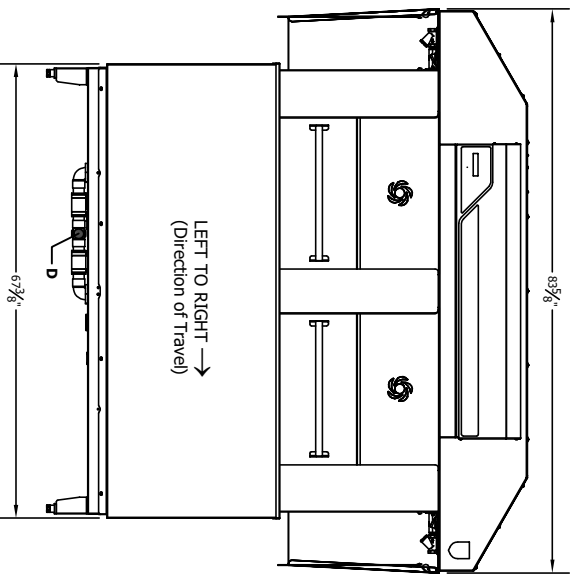
- NOTES:
1. ALLOW 6" MINIMUM CLEARANCE ABOVE THE VENT FAN DISCHARGE
 2. ALLOW 24" MIN. CLEARANCE BELOW DISH TABLE TO SERVICE ELECTRICAL EQUIPMENT



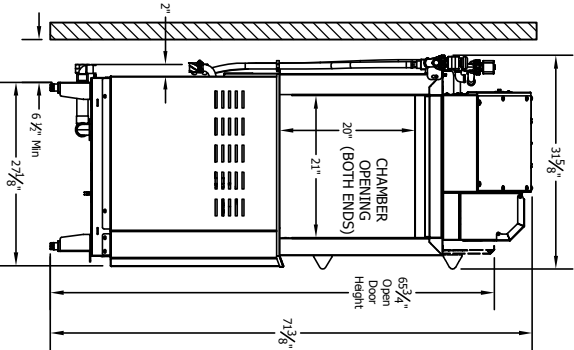
TOP VIEW



REAR VIEW



FRONT VIEW



SIDE VIEW

UNLESS OTHERWISE SPECIFIED, DIMENSIONS ARE IN INCHES

XX	XXX	FRACTIONS	ANGLES
±.02	±.005	±1/32	±1/2

THE INFORMATION ON THIS DRAWING IS THE PROPERTY OF INSINGER MACHINE COMPANY AND MAY NOT BE REPRODUCED OR TRANSMITTED IN ANY FORM OR BY ANY MEANS, INCLUDING BUT NOT LIMITED TO THE COPYING OF THIS DRAWING FOR ANY PURPOSES WITHOUT THE WRITTEN PERMISSION OF INSINGER MACHINE COMPANY. ANY VIOLATION OF THE PROPRIETARY RIGHTS OF INSINGER MACHINE COMPANY WILL BE THE PARTY RESPONSIBLE TO APPROPRIATE LEGAL ACTION.



INSINGER MACHINE CO.
646 STATE ROAD
PHILADELPHIA, PA 19135

DRAWN BY:	DATE:
SCALE:	1:1

DESCRIPTION:	High Temperature Back Converter	REV:
DATE:	02/04/25	A
REVISION DATE:	02/04/25	1 OF 1